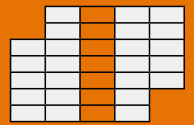


工业切割机 - ICU / BCU 5, 10 & 20



日常维护

日常预防性维护只需要大约1-2分钟时间，但却可以使您的液压剪处在最佳状态。



1

检查快速接头是否有脏物和损坏。(ICU)



2

检查防尘罩是否有污垢和损坏。(ICU)



3

检查油管是否有破损和泄漏。(ICU)

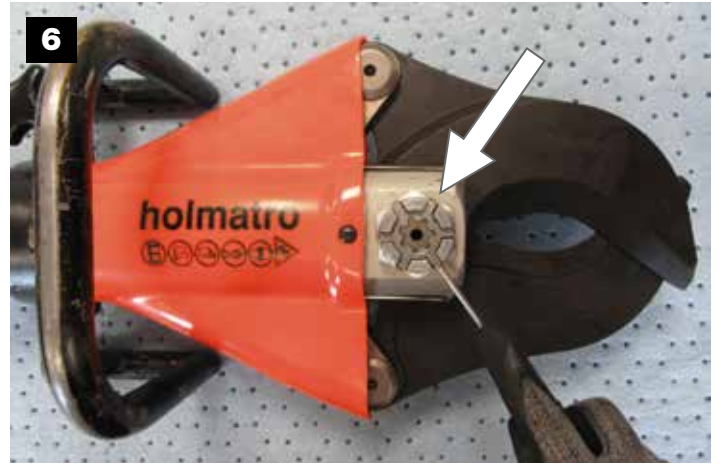


4

初始状态



5



6



7



ICU 5: **36mm**
ICU 10 / 20: **41mm**



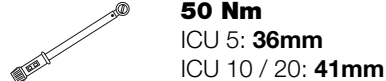
8

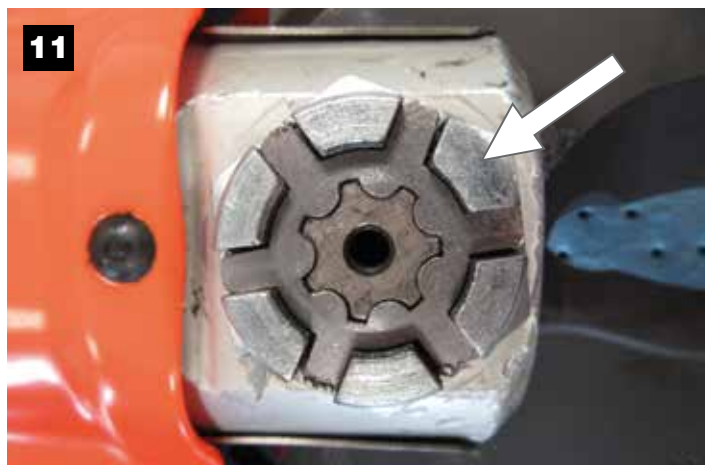


9



10

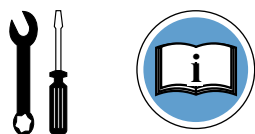





! 一侧固定。

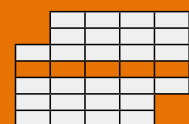




4mm




周保养

经过几分钟时间，液压剪就可以使用了。你可以通过完整、重要的保养，使得你的液压剪寿命大大延长。

检查快速接头是否有脏物和损坏。(ICU)

检查防尘罩是否有污垢和损坏。(ICU)



3

检查油管是否有破损和泄漏。(ICU)



4

初始状态

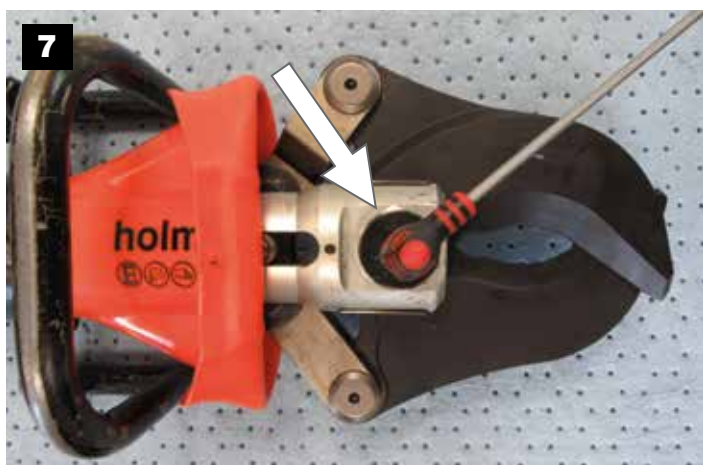
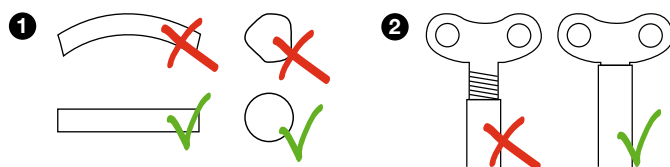


5

两边



6



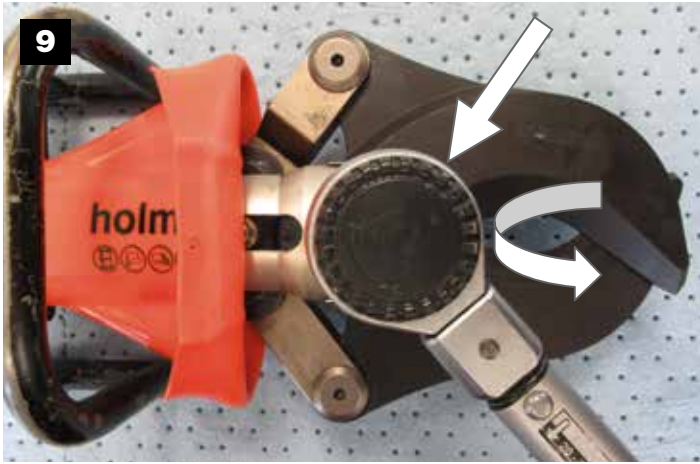
7

4mm

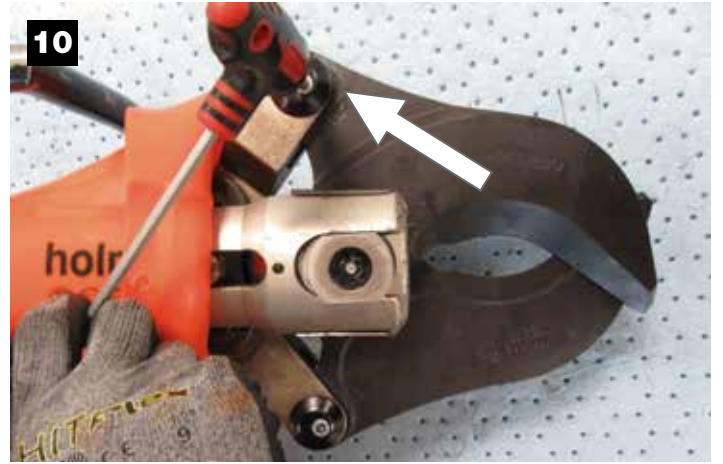


8

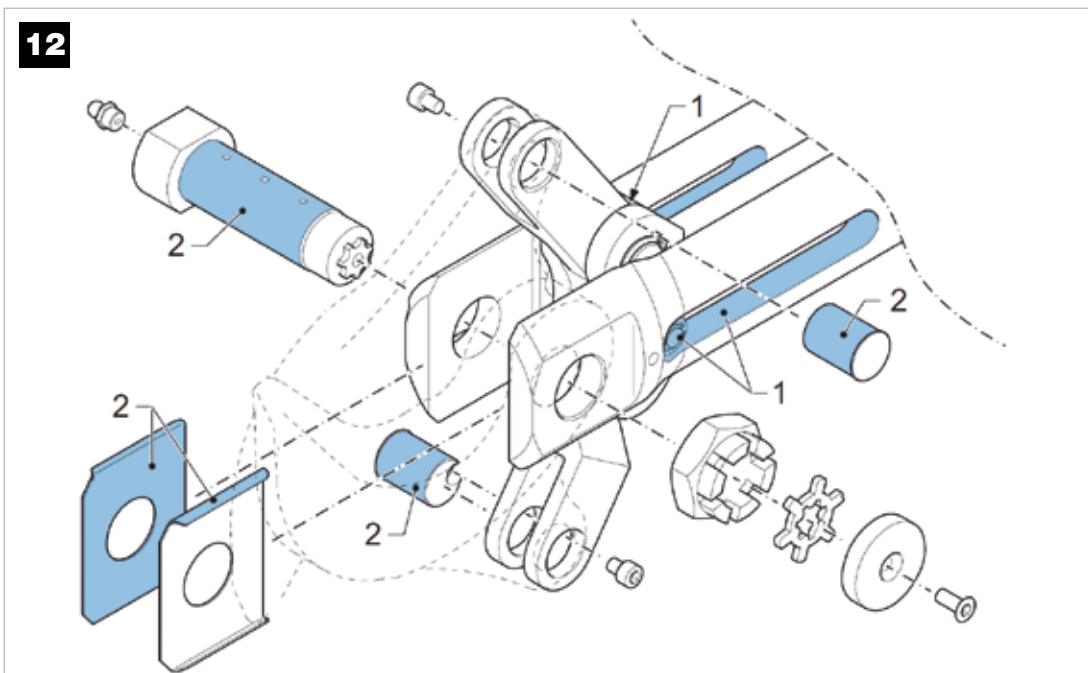
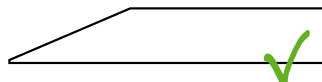




ICU 5: **36mm**
ICU 10 / 20: **41mm**



两边



所有部件
(Motip)



(Sir John)



(Molycote)

