

Technical specification sheet

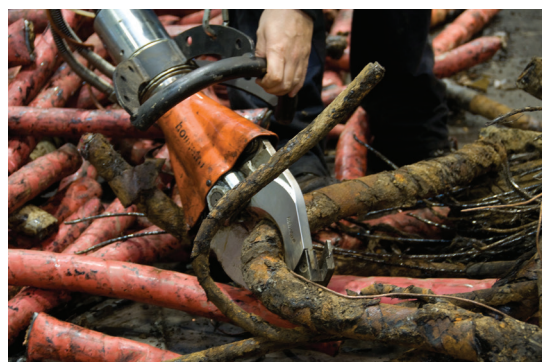
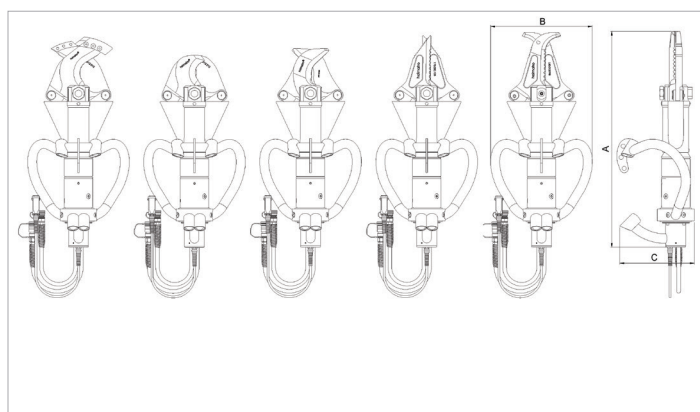
ICU 20 STH 10 | Stationary Cutter - 2 hand controlled

Specifications		
article number		170.012.078
model		ICU 20 STH 10
blade type		10 cable
cutter type		stationary
short description		Stationary Cutter - 2 hand controlled
max. working pressure	bar/Mpa	500 / 50
max. cutting opening	mm	115
max. cutting force	kN/t	242 / 24.7
required oil content (effective)	cc	84
weight, ready for use	kg	28.5
temperature range	°C	-20 +80
max. cutting diameter power cable	mm	110
number of cuts per day		200
number of operating hours per day		24

Technical drawing dimensions		
dimension A	mm	692
dimension B	mm	361
dimension C	mm	312

Required Accessories	
Balancer, 25 - 30 kg	130.581.000

Accessories	
Blades, Set 30 Standard	170.013.042
Blades, Set 40 Straight	170.013.038



holmatro.com

© Holmatro 2024-07-04

While the greatest care has been devoted to the content, it is possible that the information in this printed matter is incorrect or incomplete. Holmatro B.V. and its affiliated companies (hereafter: Holmatro) cannot be held liable in any way for the consequences of activities undertaken on the basis of this printed matter. Values can vary within the manufacturer measurements. If you have any doubts about the correctness or completeness of the information, you shall contact Holmatro (T +31 (0)162-751480). Nothing from this printed matter can be copied and/or made public in any way without the explicit authorisation of Holmatro.