

## Technical specification sheet

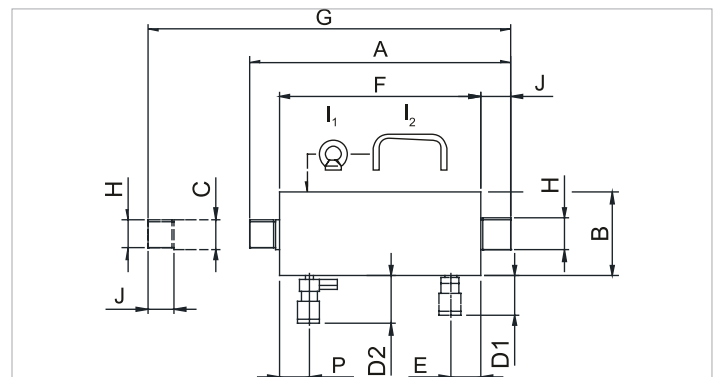
# HPJ 30 S 15 | Pulling Cylinder

Specifications		
article number		100.131.011
short description		Pulling Cylinder
model		HPJ 30 S 15
max. working pressure	psi	10443
tonnage	lb	66139.0
stroke	in	5.9
capacity	lbf	67150
effective pressure area	sq. in.	6.4
required oil content (effective)	oz	21.1
connection		A 118
cylinder type		pulling
acting type		single
return type		spring
material		steel
weight, ready for use	lb	57.3

Technical drawing dimensions		
dimension A	in	18.5
dimension B	in	4.6
dimension C	in	1.6
dimension D2	in	3.3
dimension F	in	15
dimension G	in	24.4
dimension H	threadsize	M38x1.5
dimension J	in	1.6
dimension P	in	1.7

Standard supplied with	
• High flow female coupler A118, with pressure relief valve A418	

Required Accessories	
Pulling Eye HPJ 11/30 - 2 Required	100.181.051
Protection Spring HPJ 11/30 S 15	100.581.160
Clevis Eye - 30 Ton - 2 Required	100.181.057



holmatro.com

© Holmatro 2024-01-05

While the greatest care has been devoted to the content, it is possible that the information in this printed matter is incorrect or incomplete. Holmatro B.V. and its affiliated companies (hereafter: Holmatro) cannot be held liable in any way for the consequences of activities undertaken on the basis of this printed matter. Values can vary within the manufacturer measurements. If you have any doubts about the correctness or completeness of the information, you shall contact Holmatro (T +31 (0)162-751480). Nothing from this printed matter can be copied and/or made public in any way without the explicit authorisation of Holmatro.