

## Technical specification sheet

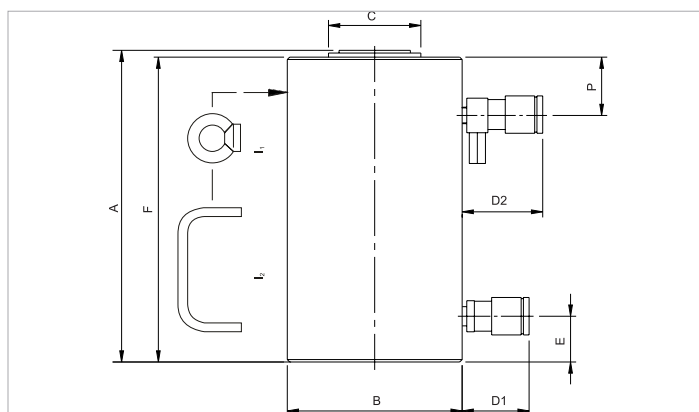
# HJ 150 H 15 | Cylinder

Specifications		
article number		100.122.061
short description		Cylinder
model		HJ 150 H 15
max. working pressure	bar/Mpa	720 / 72
tonnage	t	150
stroke	mm	150
closed height	mm	317
capacity	kN/t	1538.9 / 156.9
effective pressure area (press)	cm <sup>2</sup>	213.8
effective pressure area (retract)	cm <sup>2</sup>	110
required oil content (effective)	cc	1557
required oil content (press)	cc	3207
required oil content (retract)	cc	1650
connection		A 118
cylinder type		high tonnage
acting type		double
return type		hydraulic
material		steel
weight, ready for use	kg	76.0

Technical drawing dimensions		
dimension A	mm	317
dimension B	mm	227
dimension C	mm	115
dimension D1	mm	70
dimension D2	mm	85
dimension E	mm	57
dimension F	mm	310
dimension P	mm	55
I type		[I1]

Standard supplied with	
• High flow female coupler A118	
• Flat saddle	

Accessories	
Tilting Saddle HJ 100 - 150 (SN)	100.181.044



[holmatro.com](http://holmatro.com)

© Holmatro 2024-02-28

While the greatest care has been devoted to the content, it is possible that the information in this printed matter is incorrect or incomplete. Holmatro B.V. and its affiliated companies (hereafter: Holmatro) cannot be held liable in any way for the consequences of activities undertaken on the basis of this printed matter. Values can vary within the manufacturer measurements. If you have any doubts about the correctness or completeness of the information, you shall contact Holmatro (T +31 (0)162-751480). Nothing from this printed matter can be copied and/or made public in any way without the explicit authorisation of Holmatro.