

## Technical specification sheet

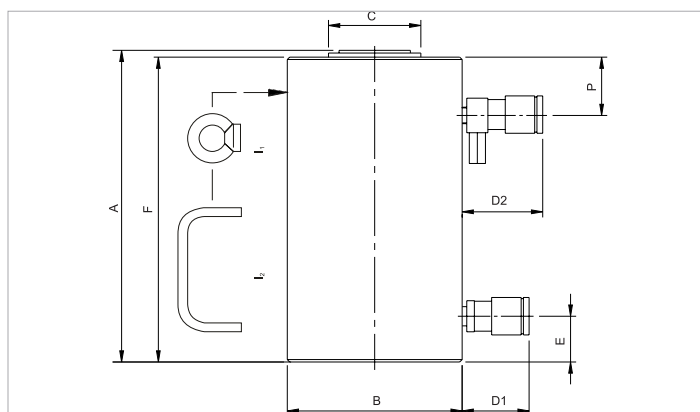
# HJ 100 H 30 | Cylinder

Specifications		
article number		100.122.054
short description		Cylinder
model		HJ 100 H 30
max. working pressure	bar/Mpa	720 / 72
tonnage	t	100
stroke	mm	300
closed height	mm	497
capacity	kN/t	1029.3 / 105
effective pressure area (press)	cm <sup>2</sup>	143
effective pressure area (retract)	cm <sup>2</sup>	56.6
required oil content (effective)	cc	2595
required oil content (press)	cc	4290
required oil content (retract)	cc	1695
connection		A 118
cylinder type		high tonnage
acting type		double
return type		hydraulic
material		steel
weight, ready for use	kg	85.0

Technical drawing dimensions		
dimension A	mm	497
dimension B	mm	178
dimension C	mm	105
dimension D1	mm	70
dimension D2	mm	85
dimension E	mm	52
dimension F	mm	490
dimension P	mm	70
I type		[I1]

Standard supplied with	
• High flow female coupler A118	
• Flat saddle	

Accessories	
Tilting Saddle HJ 100 - 150 (SN)	100.181.044



[holmatro.com](http://holmatro.com)

© Holmatro 2024-02-28

While the greatest care has been devoted to the content, it is possible that the information in this printed matter is incorrect or incomplete. Holmatro B.V. and its affiliated companies (hereafter: Holmatro) cannot be held liable in any way for the consequences of activities undertaken on the basis of this printed matter. Values can vary within the manufacturer measurements. If you have any doubts about the correctness or completeness of the information, you shall contact Holmatro (T +31 (0)162-751480). Nothing from this printed matter can be copied and/or made public in any way without the explicit authorisation of Holmatro.