

## Technical specification sheet

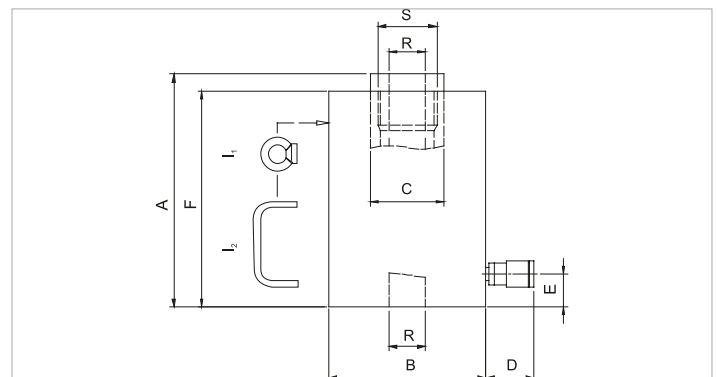
# HHJ 60 S 7.5 | Hollow Plunger Cylinder

Specifications		
article number		100.112.081
short description		Hollow Plunger Cylinder
model		HHJ 60 S 7.5
max. working pressure	psi	10443
tonnage	lb	132277.0
stroke	in	3
closed height	in	10.7
capacity	lbf	137223
effective pressure area	sq. in.	13.1
required oil content (effective)	oz	21.5
connection		A 118
cylinder type		hollow plunger
acting type		single
return type		spring
material		steel
weight, ready for use	lb	76.1

Technical drawing dimensions		
dimension A	in	10.7
dimension B	in	6.5
dimension C	in	3.1
dimension D	in	2.8
dimension E	in	1.6
dimension F	in	10.1
dimension R	in	1.8
dimension S	threadsize	M65x1,5
I type		[I2]

Standard supplied with	
• High flow female coupler A118	
• Hollow saddle (with the exception of the HHJ5S2.5, HHJ12S5 and HHJ12S15)	

Accessories	
Flat Saddle S 60 B	100.181.021
Thread Saddle S 60 C	100.181.022



holmatro.com

© Holmatro 2023-12-07

While the greatest care has been devoted to the content, it is possible that the information in this printed matter is incorrect or incomplete. Holmatro B.V. and its affiliated companies (hereafter: Holmatro) cannot be held liable in any way for the consequences of activities undertaken on the basis of this printed matter. Values can vary within the manufacturer measurements. If you have any doubts about the correctness or completeness of the information, you shall contact Holmatro (T +31 (0)162-751480). Nothing from this printed matter can be copied and/or made public in any way without the explicit authorisation of Holmatro.