

Technical specification sheet

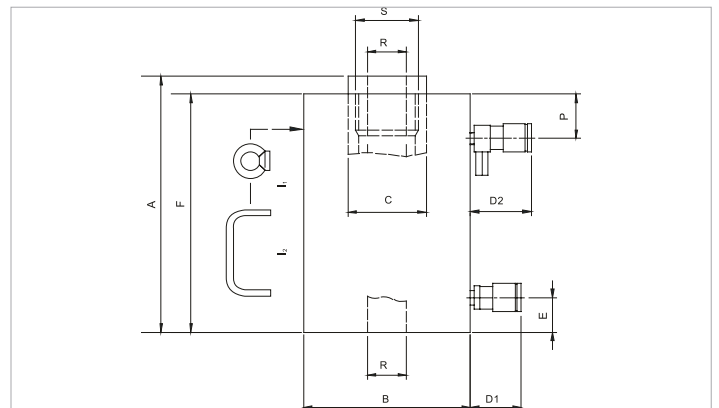
HHJ 60 H 20 | Hollow Plunger Cylinder

Specifications		
article number		100.122.031
short description		Hollow Plunger Cylinder
model		HHJ 60 H 20
max. working pressure	bar/Mpa	720 / 72
tonnage	t	60
stroke	mm	200
closed height	mm	334
capacity (press)	kN/t	610.4 / 62.2
capacity (retract)	kN/t	452.4 / 46.1
effective pressure area (press)	cm ²	84.8
effective pressure area (retract)	cm ²	62.8
required oil content (press)	cc	1696
required oil content (retract)	cc	1256
connection		A 118
cylinder type		hollow plunger
acting type		double
return type		hydraulic
material		steel
weight, ready for use	kg	40.0

Technical drawing dimensions		
dimension A	mm	334
dimension B	mm	166
dimension C	mm	80
dimension D1	mm	70
dimension D2	mm	85
dimension E	mm	41
dimension F	mm	319
dimension P	mm	39
dimension R	mm	45
dimension S	threadsize	M65x1,5
I type		[I2]

Standard supplied with	
• High flow female coupler A118	
• Hollow saddle (with the exception of the HHJ5S2.5, HHJ12S5 and HHJ12S15)	

Accessories	
Flat Saddle S 60 B	100.181.021
Thread Saddle S 60 C	100.181.022



holmatro.com

© Holmatro 2023-12-07

While the greatest care has been devoted to the content, it is possible that the information in this printed matter is incorrect or incomplete. Holmatro B.V. and its affiliated companies (hereafter: Holmatro) cannot be held liable in any way for the consequences of activities undertaken on the basis of this printed matter. Values can vary within the manufacturer measurements. If you have any doubts about the correctness or completeness of the information, you shall contact Holmatro (T +31 (0)162-751480). Nothing from this printed matter can be copied and/or made public in any way without the explicit authorisation of Holmatro.