

Technical specification sheet

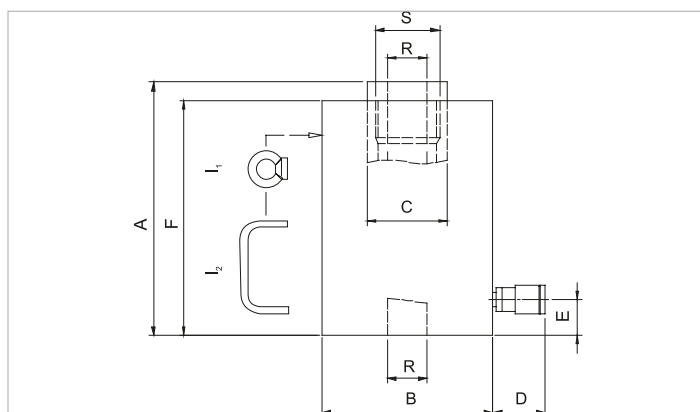
HHJ 30 S 7.5 | Hollow Plunger Cylinder

Specifications		
article number		100.112.055
short description		Hollow Plunger Cylinder
model		HHJ 30 S 7.5
max. working pressure	bar/Mpa	720 / 72
tonnage	t	30
stroke	mm	75
closed height	mm	226
capacity	kN/t	293.7 / 29.9
effective pressure area	cm ²	40.8
required oil content (effective)	cc	306
connection		A 118
cylinder type		hollow plunger
acting type		single
return type		spring
material		steel
weight, ready for use	kg	15.0

Technical drawing dimensions		
dimension A	mm	226
dimension B	mm	118
dimension C	mm	60
dimension D	mm	90
dimension E	mm	33
dimension F	mm	214
dimension R	mm	33
dimension S	threadsize	M50x1,5

Standard supplied with	
• High flow female coupler A118	
• Hollow saddle (with the exception of the HHJ5S2.5, HHJ12S5 and HHJ12S15)	

Accessories	
Flat Saddle S 35 B	100.181.015
Thread Saddle S 35 C	100.181.016



holmatro.com

© Holmatro 2023-12-07

While the greatest care has been devoted to the content, it is possible that the information in this printed matter is incorrect or incomplete. Holmatro B.V. and its affiliated companies (hereafter: Holmatro) cannot be held liable in any way for the consequences of activities undertaken on the basis of this printed matter. Values can vary within the manufacturer measurements. If you have any doubts about the correctness or completeness of the information, you shall contact Holmatro (T +31 (0)162-751480). Nothing from this printed matter can be copied and/or made public in any way without the explicit authorisation of Holmatro.