

Technical specification sheet

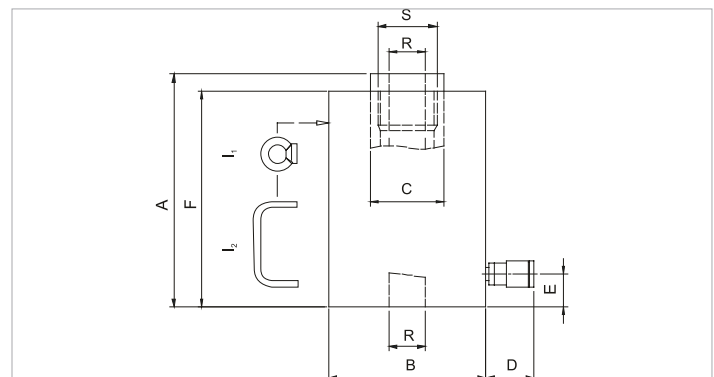
HHJ 20 S 15 | Hollow Plunger Cylinder

Specifications		
article number		100.112.030
short description		Hollow Plunger Cylinder
model		HHJ 20 S 15
max. working pressure	psi	10443
tonnage	lb	44092.0
stroke	in	5.9
closed height	in	15.3
capacity	lbf	50335
effective pressure area	sq. in.	4.8
required oil content (effective)	oz	15.8
connection		A 118
cylinder type		hollow plunger
acting type		single
return type		spring
material		steel
weight, ready for use	lb	39.7

Technical drawing dimensions		
dimension A	in	15.3
dimension B	in	3.9
dimension C	in	2
dimension D	in	3.5
dimension E	in	1.2
dimension F	in	14.8
dimension R	in	1.1
dimension S	threadsize	M38x1,5
I type		[I2]

Standard supplied with	
• High flow female coupler A118	
• Hollow saddle (with the exception of the HHJ5S2.5, HHJ12S5 and HHJ12S15)	

Accessories	
Flat Saddle S 20 B	100.181.012
Thread Saddle S 20 C	100.181.013



holmatro.com

© Holmatro 2023-12-07

While the greatest care has been devoted to the content, it is possible that the information in this printed matter is incorrect or incomplete. Holmatro B.V. and its affiliated companies (hereafter: Holmatro) cannot be held liable in any way for the consequences of activities undertaken on the basis of this printed matter. Values can vary within the manufacturer measurements. If you have any doubts about the correctness or completeness of the information, you shall contact Holmatro (T +31 (0)162-751480). Nothing from this printed matter can be copied and/or made public in any way without the explicit authorisation of Holmatro.