

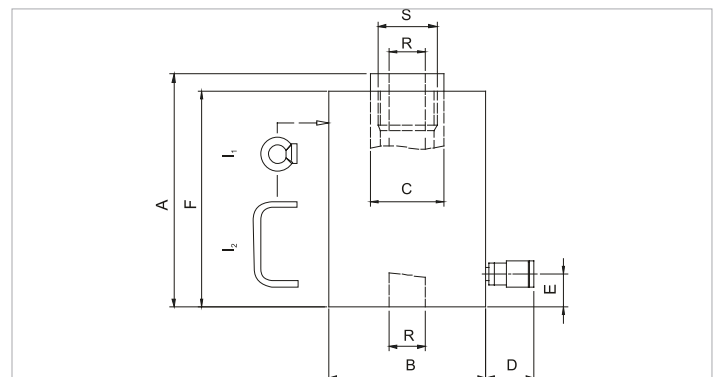
Technical specification sheet

HHJ 12 S 15 | Hollow Plunger Cylinder

| Specifications | | |
|----------------------------------|---------|-------------------------|
| article number | | 100.111.029 |
| short description | | Hollow Plunger Cylinder |
| model | | HHJ 12 S 15 |
| max. working pressure | psi | 10443 |
| tonnage | lb | 26455.0 |
| stroke | in | 5.9 |
| closed height | in | 11.7 |
| capacity | lbf | 28483 |
| effective pressure area | sq. in. | 2.7 |
| required oil content (effective) | oz | 8.9 |
| connection | | A 118 |
| cylinder type | | hollow plunger |
| acting type | | single |
| return type | | spring |
| material | | steel |
| weight, ready for use | lb | 24.3 |

| Technical drawing dimensions | | |
|------------------------------|----|------|
| dimension A | in | 11.7 |
| dimension B | in | 3.4 |
| dimension C | in | 1.6 |
| dimension D | in | 3.5 |
| dimension E | in | 1.1 |
| dimension F | in | 11.7 |
| dimension R | in | 0.8 |

| Standard supplied with | |
|--|--|
| • High flow female coupler A118 | |
| • Hollow saddle (with the exception of the HHJ5S2.5, HHJ12S5 and HHJ12S15) | |



holmatro.com

© Holmatro 2023-12-07

While the greatest care has been devoted to the content, it is possible that the information in this printed matter is incorrect or incomplete. Holmatro B.V. and its affiliated companies (hereafter: Holmatro) cannot be held liable in any way for the consequences of activities undertaken on the basis of this printed matter. Values can vary within the manufacturer measurements. If you have any doubts about the correctness or completeness of the information, you shall contact Holmatro (T +31 (0)162-751480). Nothing from this printed matter can be copied and/or made public in any way without the explicit authorisation of Holmatro.