

# Maintenance Instruction

## HLB 12 bar set



### Maintenance recommendations:

- **Wear full protective gear during maintenance**
- Always act according to the safety instructions as supplied with each tool!

Necessary equipment: N.A.

Consumable's: soft cloth.

**After use (every time)**

Revision 02-18

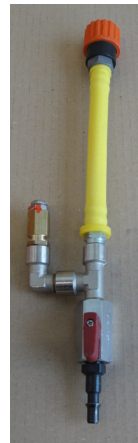
**Contact the Holmatro dealer if one of the items does not function properly!**



### Step 1

#### Check the PRV for:

- Its general condition
- Damage of the hose
- Damage of the coupler
- Precense and state of the O-ring
- Damage of the connecting threads
- Damage of the gauges



### Step 2

#### Check the shut-off hose and normal hoses for:

- Its general condition
- Damage such as cracks and cuts
- The functioning of the coupler(s)
- Dirt and leakage of the coupler(s)  
(If necessary clean coupler(s) with a soft cloth, water and soap)

Holmatro Rescue Equipment B.V. | P.O. Box 33 | 4940 AA Raamsdonksveer, the Netherlands | T +31 (0)162 589200 | rescue@holmatro.com | [www.holmatro.com](http://www.holmatro.com)

While the greatest care has been devoted to the content, it is possible that the information in this printed matter is incorrect or incomplete. N.V. Holmatro and its affiliated companies (hereafter: Holmatro) cannot be held liable in any way for the consequences of activities undertaken on the basis of this printed matter. If you have any doubts about the correctness or completeness of the information, you shall contact Holmatro. Nothing from this printed matter can be copied and/or made public in any way without the explicit authorization of Holmatro.

## HLB 12 bar set



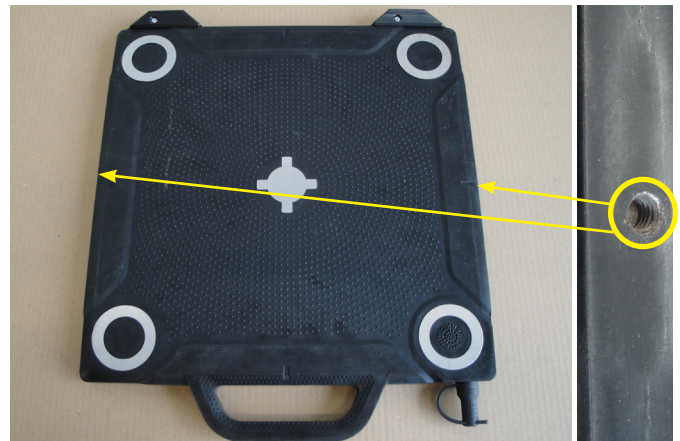
### Step 3

#### Check the HDC 12 bar for:

- Its general condition
- Damage that could interfere with safe operation
- Correct functioning of the couplers
- Smooth operation and damage of the control switches
- Damage and solid connection of the carrying handle

### Step 4

Check the 3x pressure gauges for damage and check the functioning of the LED lights in the pressure gauges.



### Step 5

#### Check the HLB 12 bar for:

- Its general condition
- Glass splinters, remove from the bag
- Contact with aggressive fluids, if so clean bag with water and soap
- Visible damage deeper than 3mm under the non-slip profile
- Visible bumps and thickening more than 3mm
- Wear on non-slip profile, max 50% can be worn out
- Presence and state of the slider pads (if applicable)

### Step 6

#### Check the HLB 12 bar for:

- Correct functioning of the coupler
- Presence and state of the slider pads (if applicable)
- State of the carrying handle (if applicable)
- Check the inserts on the side of the lifting bag, make sure they are not damaged or dirty (if applicable)

**Note: the HLB 2, 6 and 8 don't have slider pads or a carrying handle. Inserts start from HLB 21 and larger.**